



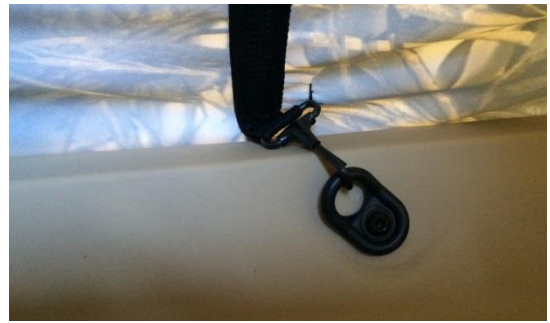
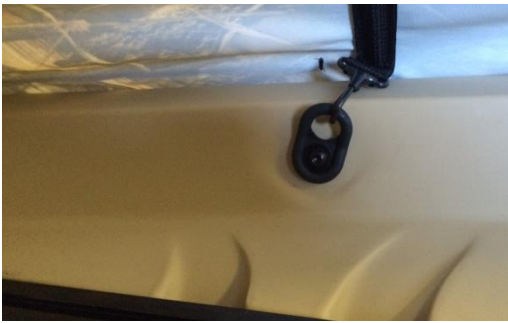
Frontier 10 Layout Duck Blind Instructions

1. Parts List

- | | | |
|------------------|-------------------------|-------------|
| 1 – Layout Blind | 2 – Deck Rings | 2 - Washers |
| 2 – Door Panels | 2 – Self-Tapping Screws | |

2. Install Layout Blind

- Install the provided deck rings on the rear of the boat in-line with the scuppers and flush with the top of the gunwale using provided washers and screws.
- Install blind over bow and stern of the Frontier.
- Connect hooks at the ends of the battens to the Deck Rings on the Frontier inside gunwale. There are a total of 4 hooks.
- Secure blind on Frontier by cinching bungee cords on the stern end.



3. Install Door Panels

- Connect Door panels via buckles.
- Tapered end goes to towards the stern of the Frontier.
- Tighten as desired via strap on stern end buckle.



4. Ready to Use!

