



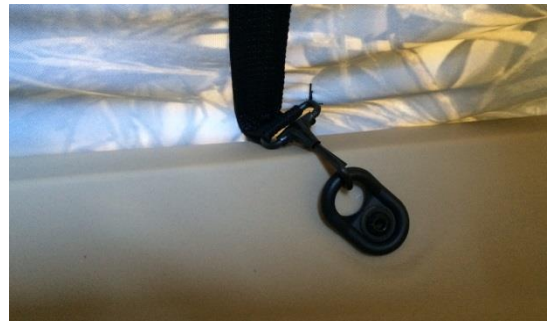
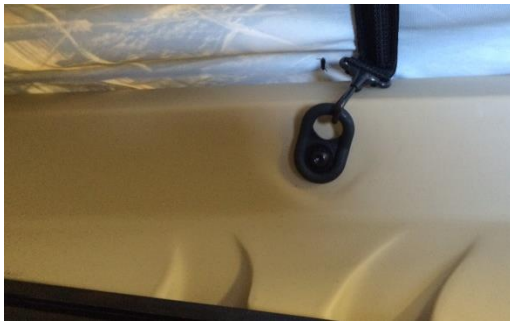
Frontier 12 Layout Duck Blind Instructions

1. Parts List

- 1 – Layout Blind
- 2 – Door Panels
- 2 – Deck Rings (For 2016 or Newer Models Only)

2. Install Layout Blind

- a. Install blind over bow and stern of the Frontier.
- b. Connect hooks at the ends of the battens to the Deck Rings on the Frontier inside gunwale. There are a total of 4 hooks. *(2017 or Newer Models use deck rings to replace rod hooks on the bow batten section)*
- c. Secure blind on Frontier by cinching bungee cords on the stern end.



3. Install Door Panels

- a. Connect Door panels via buckles.
- b. Tapered end goes towards the stern of the Frontier.
- c. Tighten as desired via strap on stern end buckle.



4. Ready to Use!

